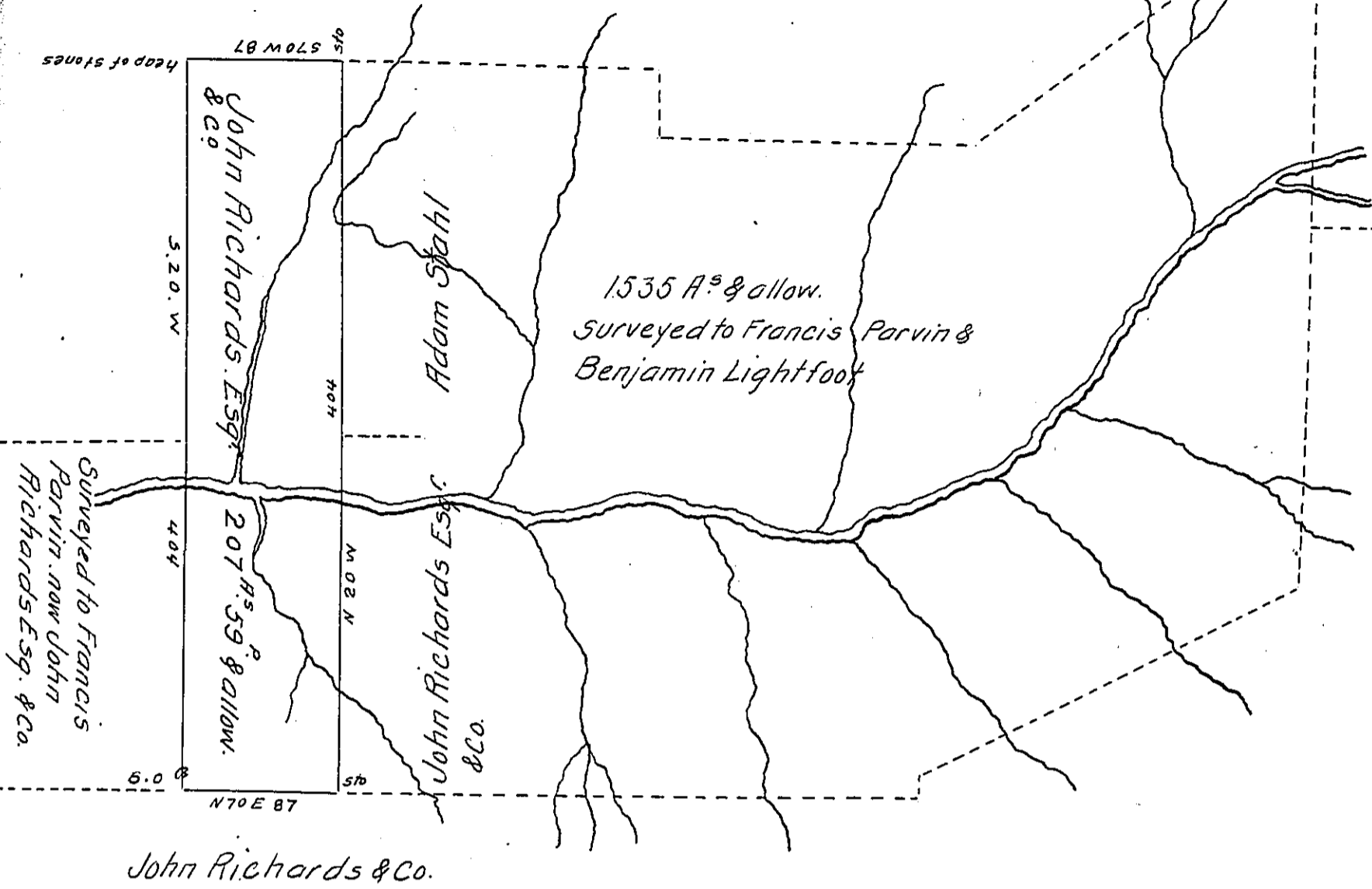


George Ohlinger
James Tachrah, now



Situate in Schuylkill Township, Schuylkill County, Containing 207^A 59^P
 & allowance of six per Cents for Roads &c. part of 1535^A & allow. which
 was surveyed to Francis Parvin & Benjamin Lightfoot, by a Warrant
 granted to them, dated the 5th of July A.D. 1751, surveyed for John Rich-
 ards Esq. & Co. as part of the Valley Furnace lands, October 12th A.D. 1823.

By

To Samuel Cochran, Esq
 Surveyor Gen. of Penna.

Jon Dreher, D.S.

IN TESTIMONY that the above is a copy of the original remaining on file in
 the Department of Internal Affairs of Pennsylvania, made
 conformably to an Act of Assembly approved the 16th day of
 February, 1833, I have hereunto set my Hand and caused
 the Seal of said Department to be affixed at Harrisburg,
 this twelfth day of July 1906.

Loac D. Brown
 Secretary of Internal Affairs.